

# STUFF YOU SHOULD KNOW



**CAMP JONAH is a place where people laugh, hearts change and God smiles.  
We are a Christian, 501(c)(3), non-profit camp and retreat center that operates year-round  
providing Christian camps as well as hosting rental camps and retreats.**

**We'd love to help you tailor-make your event.**

31 Little Mountain Road, Trout Lake, WA 98650  
TEL 509-395-2900 \* [jonah@campjonah.com](mailto:jonah@campjonah.com) \* [www.campjonah.com](http://www.campjonah.com)

**CAMP JONAH** is a Christian, 501(c)(3), non-profit camp and retreat center. We operate year-round providing Christian camps, and hosting rental camps and retreats who can honor our Mission Statement and Statements of Faith.

**Memberships:**

Christian Camp and Conference Association (CCCA), Christian Video Licensing Incorporated (CVLI),  
Christian Copyright Licensing, Inc. (CCLI)

**Arrival & Departure Times:**

Weekend groups normally arrive on Friday evening. Departure time is Sunday at 10:30 am.  
Please check with the office for specifics.

**Food Requests:**

Please inform us at least two weeks prior to arrival if you have any special dietary needs that require special foods.

**Bus Transportation:**

We can provide bus transportation for your group for \$3.00 per mile. This price is subject to change as fuel prices increase. If the bus ride is over 5 hours, we add a hotel charge. The cargo trailer is an additional \$50.

**Guest Rooms/Meeting Rooms:**

We will communicate prior to arrival how many sleeping/meeting rooms you will need.  
You must bring bedding for ALL rooms.

**Schedule:**

Please email your schedule to us at least two weeks prior to your arrival so that we can have the activities, personnel, etc. ready to meet all your needs.

**Meal Times:**

We prefer 8:30, 12:30 & 5:30, but we'll gladly make changes if you ask before you arrive.

**Quiet Hours:**

Indoors: it's up to you. Outdoors: 10:30 PM - 7:00 AM.

Please remember to be quiet between the main building and The Lunch Counter (Camp Store) during quiet hours.

**Lost & Found:**

We will keep "found" items for two weeks only. Please call or email quickly if you've left something behind and we'll mail it to you. During your retreat, please put unclaimed items on Lost & Found table in lower hall.  
Please check ALL rooms prior to leaving for items left behind.

**Cleaning List:**

We'll clean up after you, but we sure appreciate you taking everything (and everyone) home with you!

**Creekside Lodge:**

We are very near to completion of this additional 5000 sq. ft. building with more housing, shower/bathrooms and a large meeting room. Use will be an additional cost. We will be booking this soon.

**Hood River Bridge Toll**

The bridge crossing the Columbia River from Hood River into Washington has a cash toll of \$3.50 each way.

### **IMPORTANT! 3-Step Payment Plan** (check or credit card):

1. Send deposit with your contract. The non-refundable deposit is normally 10% of the total minimum cost of the retreat.
2. Minimum balance is due upon arrival. Please request check from church/organization treasurer early so that you can bring payment with you. This payment will be processed on the Tuesday after you depart. You will receive a receipt by email.
3. Final balance is due within two weeks of departure. We'll email you an invoice with the final amount due.

### **Cancellation Policy:**

Your group will be required to pay 50% of the Minimum Guarantee if you cancel your contract 90 days prior to the first day of the retreat. You will be required to pay the full Minimum Guarantee if you cancel this contract 30 days or less prior to the first day of the retreat. Your contract requires us to reserve specific dates, staff, activities, and equipment for your group. We may have turned other groups away and already purchased groceries, etc. Therefore, please bring at least the contracted minimum number of participants. Our heart is not to charge you for people you did not bring, but we must cover our time and expenses.

### **IMPORTANT! 3 Forms Needed:**

1. Contract (sign, return with deposit)
2. Certificate of Insurance (We carry only secondary insurance. You must be covered by your group's insurance policy.)
3. Acknowledgement of Risk forms for each person on campus while you're here (Bring upon arrival.)

### **IMPORTANT!**

You are in charge of your group's medical needs. Please appoint a medic (with a minimum of first aid/CPR training) and bring your own first aid kit. You must provide for emergency transportation, first aid and emergency care for any injuries or illnesses occurring while on camp grounds. Injuries and sickness incurred while at camp must be reported to the camp host prior to leaving. You are also in charge of all student medication. Insulin, etc. can be stored in the refrigerator at the back of the Dining Hall.

### **Coffee/Hot Chocolate:**

For adult groups, coffee and tea will be available early morning to late at night. Directions and supplies will be on the back counter in the Dining Hall. For youth retreats, hot drinks will be available only during meal times and on cold days (coffee & tea will be available all day for leaders only). Please instruct your students (and leaders) not to help themselves to our supplies in the cupboards.

### **Conduct & Rules:**

- You are responsible to supervise ALL activities and behavior. Please have an adult with **all** students at **all** times in **all** places, including the Rec Room. **You are responsible to communicate these guidelines to the attendees of your retreat and to ensure compliance.**
- Please keep active and messy games in gym or outdoors (please no Hide & Seek-type games indoors).
- Camp Jonah (CJ) reserves the right to qualify all prospective users. **See Facility Use Policy.**
- You will be responsible for all equipment used, and will pay loss at a replacement value for breakage beyond normal wear.
- Alcoholic beverages, illegal drugs, weapons, and pets are not permitted on the grounds. Smoking outside only, please.
- Mattresses are for sleeping only and must not be removed from the bunkbeds/dorm rooms.
- Please no food or drink (other than water) in the dorms or chapel.
- No pranks and no pets, please!
- The kitchen is off-limits to anyone in your group, unless pre-arranged and users have a current Food Handler's Card.

### **Facility Use Agreement**

- We invite all people of all walks of life to join our camp programs, and we ask our guest groups to agree that while on our premises they will not hold activities or teach principles that are in conflict with our Statements of Faith and religious practices.
- Camp Jonah has the right to ask guests to cease activities or leave the facility if the guest group activities are in conflict with our Statements of Faith and/or religious practices or if their program is against the law or creates a safety hazard for guests or staff. The guest group will remain obligated to the contracted financial minimum.
- The determination whether to rent to groups under this agreement is made by the Camp Coordinator and/or our Board of Directors.

### **Camp Store/The Lunch Counter**

This area is available anytime but must always have adult supervision. We will provide you with a key on a lanyard upon arrival. Come check out our favorite hang out and camp store area. We will open the camp store upon request.

### **Rec Room**

Is located upstairs in the main building and has Pool Table, Ping Pong, Foosball, Pop-a-Shot Basketball and Carpet Ball.

You must have a leader supervising this room at all times.

This person will be responsible to oversee use of the room and all the equipment.

### **Bring-your-own-Snacks**

If you bring your own snacks, please store/serve them at the back of the Dining Hall. There are cupboards for storage and a refrigerator/freezer/microwave for your use. Bring EVERYTHING necessary for serving your snacks (plates, cups, silverware, napkins, bowls, etc.). Please clean up after yourselves so that the morning kitchen crew doesn't arrive to a messy surprise!

**No students or leaders are allowed in the main kitchen without pre-approval.**

### **What to Bring**

#### Students

- Sleeping bag
- Pillow
- Towel
- Toiletries
- Clothes for all weather
- Flashlight and batteries (if caving)

#### Leaders

- Minimum Payment
- Acknowledgement of Risk Forms for each student/leader
- First aid kit
- Sleeping bag
- Pillow
- Towel
- Toiletries
- Clothes for all weather
- Ear plugs
- Garbage bags for students' wet, dirty clothes

### **Activities Available:**

Please request activities at least 2 weeks prior to arrival so that we can have adequate staff on hand to properly facilitate.

#### **ON CAMPUS**

- Gym (no charge)
- 9 High (no charge)
- Disc Golf (\$100)
- Finger Rockets (\$50 for 3 hours)
- Zipline (\$300/3 hrs)
- Laser Tag (\$300/2hrs)
- Tennis Court (no charge, bring your own racquets/balls)
- Indoor Volleyball (no charge. Involves some set-up time)
- Rec Room (no charge, foosball, carpet ball, pool, ping pong)
- Outdoor Portable Climbing Wall (28', \$200/3 hours)
- Gator Skin Balls (the original dodge ball—\$50 for 3 hours)
- Inflatable Bounce House (\$100/3 hrs)
- Inflatable 35' Bungee Run (\$100/3 hrs)
- Inflatable Obstacle Course (\$100/3 hrs)
- Giant Games (\$100/3 hrs)

#### **OFF CAMPUS**

- Hiking (no charge)
- King Swing (\$300 for 3 hrs)
- Challenge Course (guest group: \$500 flat rate, 4 hours + \$100 for each additional hour)
- Challenge Course (non-guest group \$1,500 flat rate for 6-8 hours)
- Caving (\$200, we have 40 headlamps and helmets available)
- 2.8 mile loop for walking/jogging right from our front door

**Snow Play** by request (and if weather conditions are favorable) \$400 for 4 hours. This may include snowmobiles pulling inner tubes, bonfire and s'mores, hot chocolate.

It's best to talk about activities closer to your event when we know what the weather report looks like. We can be really flexible, but we need to know what you're hoping to do as soon as possible so that we can bring in enough staff to make your event run smoothly. Let's do this together!

### **PM Shutdown Process**

Please assign one person to follow this checklist (so that we can go to bed before you do)

- Dining Hall: Lights off, turn off coffee pot and hot water pot
- Lobby: Lights off. Switch by front door. Leave outside lights on
- Upper Hall: Turn off light switch at far end of hall, turn off lights in all rooms, bathrooms (emergency lights will stay on)
- Lower Hall: Turn off hall lights (emergency lights will stay on)
- Please turn off all Bathroom and Shower Room lights
- Gym: Turn off all lights (on stage), leave heater fan on low
- Rec Room: Turn off lights
- Chapel: Lights off, video projector off (not just on standby-- red light will be showing), amp and mixer off, power screen up.

THANK YOU FOR FOLLOWING THIS SHUT DOWN CHECKLIST!

# STATEMENTS OF MISSION, VISION, VALUES AND FAITH

## “God is our Camp Director”

### MISSION STATEMENT

Camp Jonah is a place where people laugh, hearts change and God smiles.

### VISION STATEMENT

We envision a thriving, year-round camp where we create environments and experiences that encourage all to profoundly encounter Jesus and grow in living and loving like Him.

### CORE VALUES

*We value:*

- Following Jesus Christ - He is reflected in all we do.
- The Bible – study and teach the scriptures as the infallible Word of God.
- Prayer - listening to and being dependent on the guidance of the Holy Spirit
- Safety - in our attitude, facilities, programming and policies
- Hands on Experiences – learning by doing.
- Discipleship - encouraging the next step in spiritual growth
- Generosity - being affordable, giving, and saying yes.
- Partnerships – with our community, churches, volunteers, donors, staff and other supporters
- Hospitality – being a welcoming place where people come as guests and leave as friends
- Having fun – creating a space to joyfully laugh and play together

### STATEMENTS OF FAITH

*We love serving others and doing camp. Our desire is to live and love like Jesus (1 Peter 4:10-11). We invite all people of all walks of life to join our camp programs, and we ask our guest groups to agree that while on our premises they will not hold activities or teach principles that are in conflict with our Statements of Faith and religious practices.*

*We believe...*

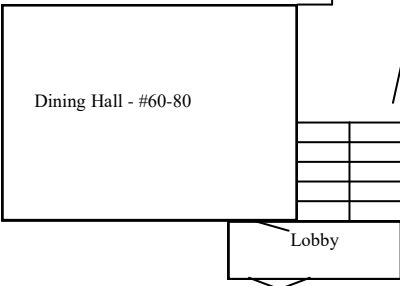
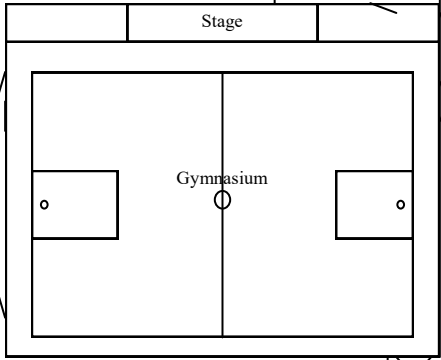
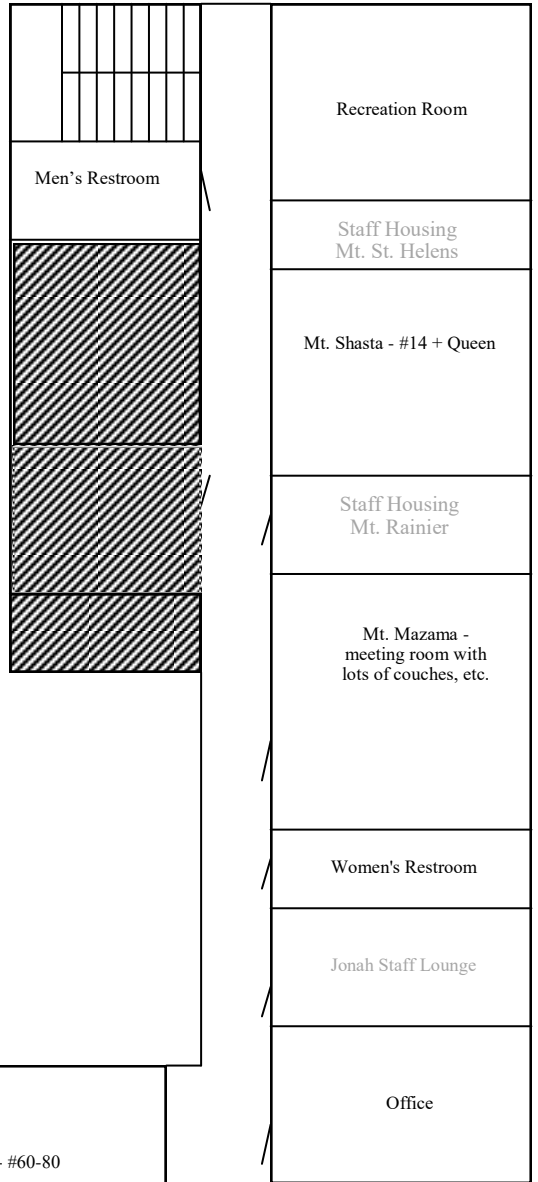
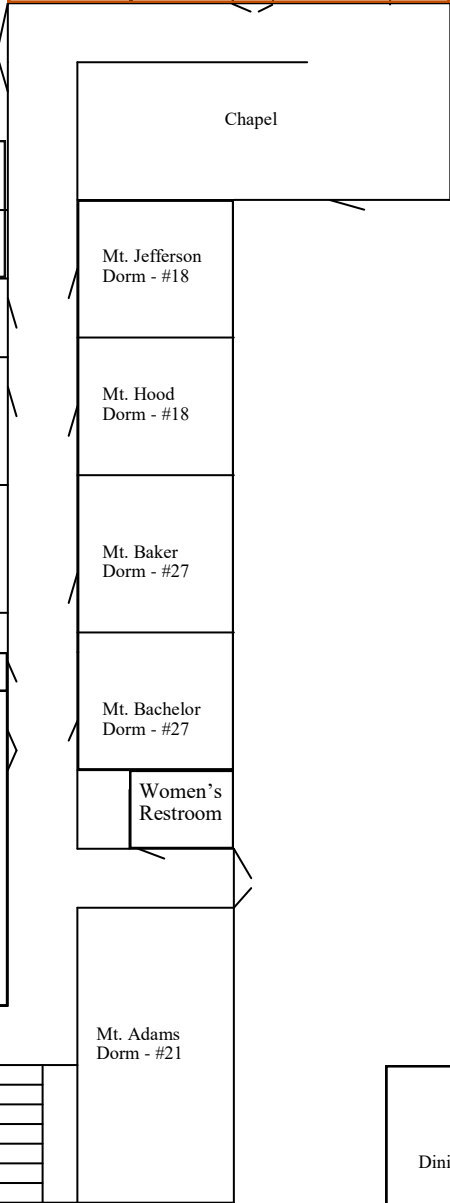
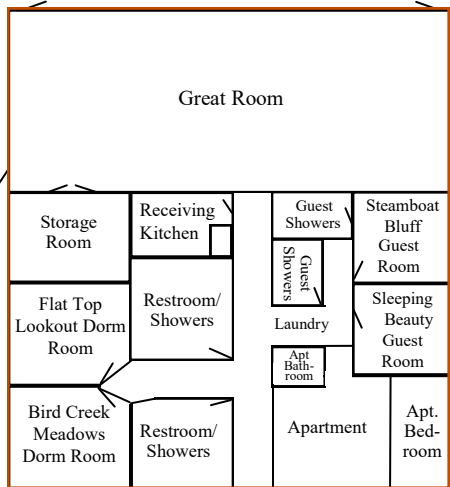
- That the Bible is the inspired, perfect Word of God *2 Timothy 3:16-17.*
- In one God, eternally present in three Persons: Father, Son, and Holy Spirit *Matthew 28:18-19, Hebrews 1:1-4, Ephesians 4:4-6.*
  - God the Father is the creator, director and protector of the universe *Isaiah 42:6-7.*
  - His Son, Jesus Christ, was miraculously conceived, killed without fault, then resurrected in order to offer us the gift of redemption *Acts 2:22-24, Romans 10:9-10, 1 John 4:14.*
  - The Holy Spirit is an ever-present help, gifted from God, to guide and speak into our lives. *John 14:16-17, Romans 8:26-27.*
- We are all sinners and the only way to receive eternal life is through belief in Jesus Christ *Romans 3:23, Acts 4:10-12, 1 John 5:11-12.*
- God planned for us to learn and grow in a community of Christ-followers *Ephesians 4:12-13, Colossians 3:11-17, Hebrews 10:24-25.*
- God created each of us unique, yet in His image, male and female *Genesis 2:18-24.*
- Human life is sacred to God, deserving dignity from conception to natural death *Matthew 10:29-31, Ephesians 2:10, Psalms 139:13-15.*
- Marriage was established by God; He designed it to be between one man and one woman. (*Mark 10:6-9*).
- Sexual activities outside of marriage go against God’s plan and cannot be blessed *Hebrews 13:4, 1 Corinthians 6:9-10, 18-20.*
- There is no greater joy than being right with God our Father *1 Peter 1:8.*

*Decisions regarding Camp Jonah’s practices, policies and disciplines are made by our Board of Directors based on the Word of God. Our Board does its best to understand God’s heart and make decisions prayerfully and carefully.*

Sunrise Cottage #8 + Queen Bed

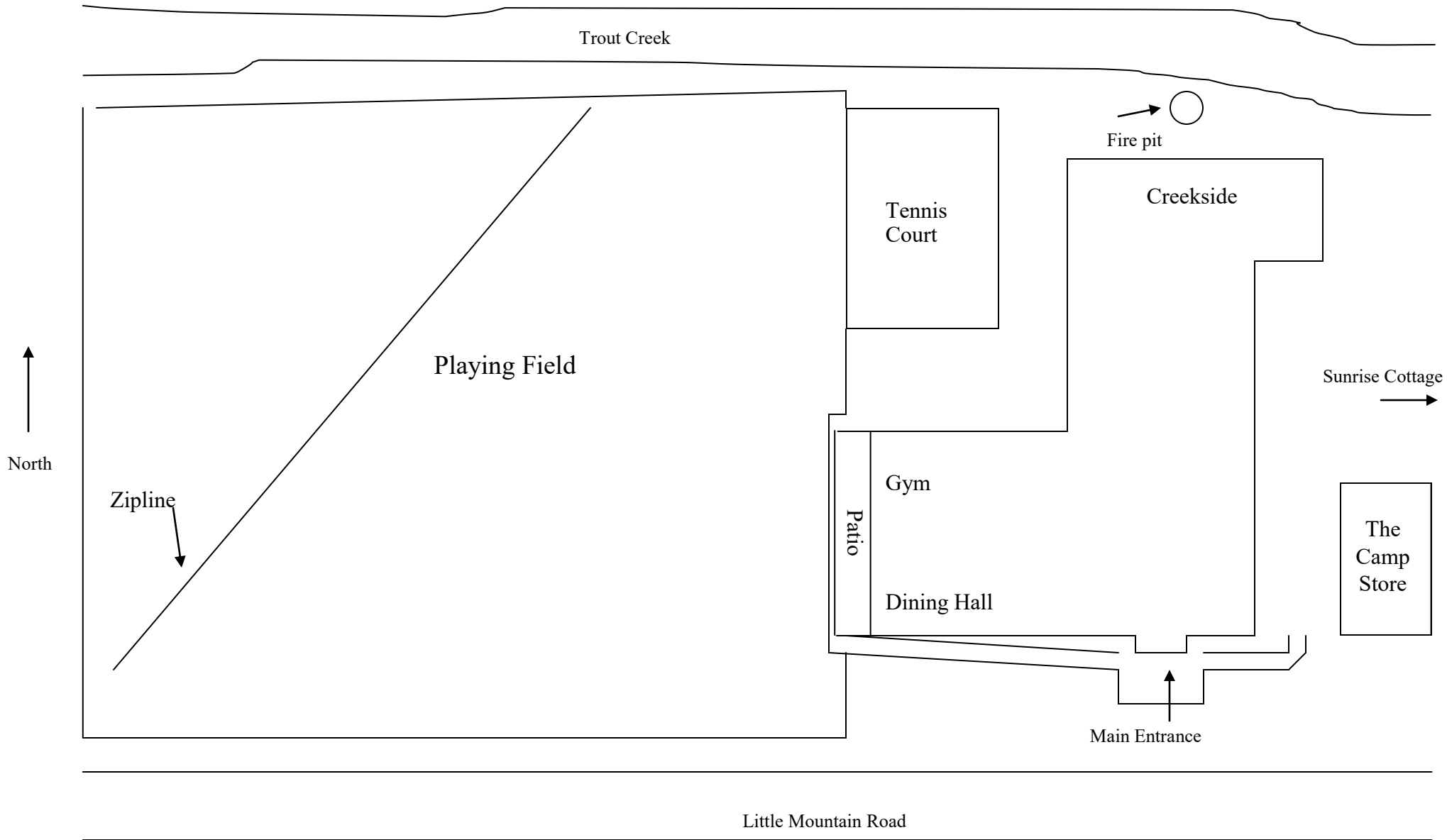
Click within the Red Dotted Boxes to view pictures of different areas of our facilities.

Creekside



Main Building Downstairs

Main Building Upstairs



# Outside Main Building